

FBX46 Rabbit Polyclonal Antibody

Description

Product type	Primary Antibody
Code	BT-AP09995
Host	Rabbit
Isotype	IgG
Size	20ul, 50ul, 100ul
Immunogen	Synthesized peptide derived from human FBX46
Mol wt	66330
Species reactivity	Human, Mouse, Rat
Clonality	Polyclonal
Recommended application	WB
Concentration	1 mg/ml
Full name	FBX46
Synonyms	FBX46

This product is for research use only, not for use in human, therapeutic or diagnostic procedure.

Background

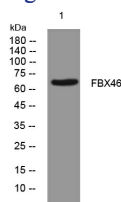
Members of the F-box protein family| such as FBXO46| are characterized by an approximately 40-amino acid F-box motif. SCF complexes| formed by SKP1 (MIM 601434)| cullin (see CUL1; MIM 603134)| and F-box proteins| act as protein-ubiquitin ligases. F-box proteins interact with SKP1 through the F box| and they interact with ubiquitination targets through other protein interaction domains (Jin et al. 2004

Recommended Dilution

WB: 1: 500 - 1: 2000

Not yet tested in other applications.

Images



Western blot analysis of lysates from 293T cells, primary antibody was diluted at 1:1000, 4°C overnight

Storage

-20°C for 1 year

501 Changsheng S Rd, Nanhui Dist, Jiaxing, Zhejiang, China

Tel: 86 21 31007137 | E-mail: save@bt-laboratory.com | www.bt-laboratory.com