

FBXL4 Rabbit Polyclonal Antibody

Description

Product type	Primary Antibody
Code	BT-AP10010
Host	Rabbit
Isotype	IgG
Size	20ul, 50ul, 100ul
Immunogen	Synthesized peptide derived from human FBXL4
Mol wt	68310
Species reactivity	Human, Mouse
Clonality	Polyclonal
Recommended application	WB
Concentration	1 mg/ml
Full name	FBXL4
Synonyms	FBXL4

This product is for research use only, not for use in human, therapeutic or diagnostic procedure.

Background

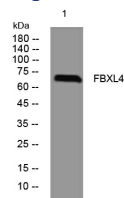
This gene encodes a member of the F-box protein family| which are characterized by an approximately 40 amino acid motif| the F-box. F-box proteins constitute one subunit of modular E3 ubiquitin ligase complexes| called SCF complexes| which function in phosphorylation-dependent ubiquitination. The F-box domain mediates protein-protein interactions and binds directly to S-phase kinase-associated protein 1. In addition to an F-box domain| the encoded protein contains at least 9 tandem leucine-rich repeats. The ubiquitin ligase complex containing the encoded protein may function in cell-cycle control by regulating levels of lysine-specific demethylase 4A. Alternative splicing results in multiple transcript variants.

Recommended Dilution

WB: 1: 500 - 1: 2000

Not yet tested in other applications.

Images



Western blot analysis of lysates from HEK293 cells, primary antibody was diluted at 1:1000, 4°C overnight

Storage

-20°C for 1 year