

## FBXW2 Rabbit Polyclonal Antibody

### Description

Product type	Primary Antibody
Code	BT-AP10012
Host	Rabbit
Isotype	IgG
Size	20ul, 50ul, 100ul
Immunogen	Synthesized peptide derived from human FBXW2
Mol wt	49940
Species reactivity	Human, Mouse, Rat
Clonality	Polyclonal
Recommended application	WB
Concentration	1 mg/ml
Full name	FBXW2
Synonyms	FBXW2

This product is for research use only, not for use in human, therapeutic or diagnostic procedure.

### Background

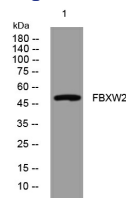
F-box proteins are an expanding family of eukaryotic proteins characterized by an approximately 40 amino acid motif the F box. Some F-box proteins have been shown to be critical for the ubiquitin-mediated degradation of cellular regulatory proteins. In fact F-box proteins are one of the four subunits of ubiquitin protein ligases called SCFs. SCF ligases bring ubiquitin conjugating enzymes to substrates that are specifically recruited by the different F-box proteins. Mammalian F-box proteins are classified into three groups based on the presence of either WD-40 repeats| leucine-rich repeats| or the presence or absence of other protein-protein interacting domains. This gene encodes the second identified member of the F-box gene family and contains multiple WD-40 repeats.

### Recommended Dilution

WB: 1: 500 - 1: 2000

Not yet tested in other applications.

### Images



Western blot analysis of lysates from HCT116 cells, primary antibody was diluted at 1:1000, 4°C overnight

### Storage

-20°C for 1 year