

FBXW5 Rabbit Polyclonal Antibody

Description

Product type	Primary Antibody
Code	BT-AP10013
Host	Rabbit
Isotype	IgG
Size	20ul, 50ul, 100ul
Immunogen	Synthesized peptide derived from human FBXW5
Mol wt	N/A
Species reactivity	Human, Mouse, Rat
Clonality	Polyclonal
Recommended application	WB
Concentration	1 mg/ml
Full name	FBXW5
Synonyms	FBXW5; F-box/WD repeat-containing protein 5; F-box and WD-40 domain-containing protein 5)

This product is for research use only, not for use in human, therapeutic or diagnostic procedure.

Background

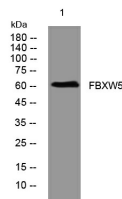
This gene encodes a member of the F-box protein family| members of which are characterized by an approximately 40 amino acid motif| the F-box. The F-box proteins constitute one of the four subunits of ubiquitin protein ligase complex called SCFs (SKP1-cullin-F-box)| which function in phosphorylation-dependent ubiquitination. The F-box proteins are divided into three classes: Fbws containing WD-40 domains| Fbls containing leucine-rich repeats| and Fbxs containing either different protein-protein interaction modules or no recognizable motifs. The protein encoded by this gene contains WD-40 domains| in addition to an F-box motif| so it belongs to the Fbw class. Alternatively spliced transcript variants encoding distinct isoforms have been identified for this gene| however| they were found to be nonsense-mediated mRNA decay (NMD) candidates| hence not represented.

Recommended Dilution

WB: 1: 500 - 1: 2000

Not yet tested in other applications.

Images



Western blot analysis of lysates from DU145 cells, primary antibody was diluted at 1:1000, 4°C overnight

Storage

-20°C for 1 year