

## FGD1 Rabbit Polyclonal Antibody

### Description

Product type	Primary Antibody
Code	BT-AP10026
Host	Rabbit
Isotype	IgG
Size	20ul, 50ul, 100ul
Immunogen	Synthesized peptide derived from human FGD1
Mol wt	N/A
Species reactivity	Human, Mouse
Clonality	Polyclonal
Recommended application	WB
Concentration	1 mg/ml
Full name	FGD1
Synonyms	FGD1; FYVE; RhoGEF and PH domain-containing protein 1; Faciogenital dysplasia 1 protein; Rho/Rac guanine nucleotide exchange factor FGD1; Rho/Rac GEF; Zinc finger FYVE domain-containing protein 3)

This product is for research use only, not for use in human, therapeutic or diagnostic procedure.

### Background

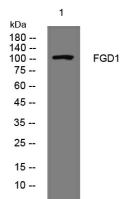
This gene encodes a protein that contains Dbl (DH) and pleckstrin (PH) homology domains and is similar to the Rho family of small GTP-binding proteins. The encoded protein specifically binds to the Rho family GTPase Cdc42Hs and can stimulate the GDP-GTP exchange of the isoprenylated form of Cdc42Hs. It also stimulates the mitogen activated protein kinase cascade leading to c-Jun kinase SAPK/JNK1 activation. Defects in this gene are the cause of faciogenital dysplasia and X-linked mental retardation| syndromatic 16.

### Recommended Dilution

WB: 1: 500 - 1: 2000

Not yet tested in other applications.

### Images



Western blot analysis of lysates from A431 cells, primary antibody was diluted at 1:1000, 4°C overnight

### Storage

-20°C for 1 year