

FILA2 Rabbit Polyclonal Antibody

Description

Product type	Primary Antibody
Code	BT-AP10040
Host	Rabbit
Isotype	IgG
Size	20ul, 50ul, 100ul
Immunogen	Synthesized peptide derived from human FILA2
Mol wt	263010
Species reactivity	Human, Mouse
Clonality	Polyclonal
Recommended application	WB
Concentration	1 mg/ml
Full name	FILA2
Synonyms	FILA2

This product is for research use only, not for use in human, therapeutic or diagnostic procedure.

Background

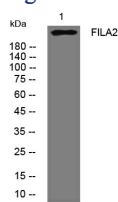
The filaggrin-like protein encoded by this gene is upregulated by calcium| proteolyzed by calpain 1| and is involved in epithelial homeostasis. The encoded protein is required for proper cornification in skin| with defects in this gene being associated with skin diseases. This protein also has a function in skin barrier protection. In fact| in addition to providing a physical barrier| C-terminal fragments of this protein display antimicrobial activity against P. aeruginosa.

Recommended Dilution

WB: 1: 500 - 1: 2000

Not yet tested in other applications.

Images



Western blot analysis of lysates from U2OS cells, primary antibody was diluted at 1:1000, 4°C overnight

Storage

-20°C for 1 year