

HLA Class I Polyclonal Antibody

Description

Product type	Primary Antibody
Code	BT-AP10062
Host	Rabbit
Isotype	IgG
Size	20ul, 50ul, 100ul
Immunogen	The antiserum was produced against synthesized peptide derived from human HLA Class I. AA range:204-253
Mol wt	40846
Species reactivity	Human, Rat, Mouse
Clonality	Polyclonal
Recommended application	WB, ELISA
Concentration	1 mg/ml
Full name	major histocompatibility complex, class I
Synonyms	major histocompatibility complex, class I; HLA-A HLAA

This product is for research use only, not for use in human, therapeutic or diagnostic procedure.

Background

HLA-A belongs to the HLA class I heavy chain paralogues. This class I molecule is a heterodimer consisting of a heavy chain and a light chain (beta-2 microglobulin). The heavy chain is anchored in the membrane. Class I molecules play a central role in the immune system by presenting peptides derived from the endoplasmic reticulum lumen. They are expressed in nearly all cells. The heavy chain is approximately 45 kDa and its gene contains 8 exons. Exon 1 encodes the leader peptide, exons 2 and 3 encode the alpha1 and alpha2 domains, which both bind the peptide, exon 4 encodes the alpha3 domain, exon 5 encodes the transmembrane region, and exons 6 and 7 encode the cytoplasmic tail. Polymorphisms within exon 2 and exon 3 are responsible for the peptide binding specificity of each class one molecule. Typing for these polymorphisms is routinely done for bone marrow and kidney trans

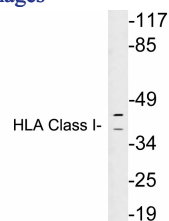
Recommended Dilution

WB: 1: 500 - 1: 2000

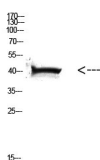
ELISA: 1: 10000 - 1: 20000

Not yet tested in other applications.

Images



Western Blot analysis of HELA cells using Antibody diluted at 500. Secondary antibody was diluted at 1:20000



Western blot analysis of lysates from Ramos cells, using HLA Class I antibody.

Storage

-20°C for 1 year

501 Changsheng S Rd, Nanhu Dist, Jiaxing, Zhejiang, China

Tel: 86 21 31007137 | E-mail: save@bt-laboratory.com | www.bt-laboratory.com