

## FMT Rabbit Polyclonal Antibody

### Description

|                                |  |
|--------------------------------|--|
| <b>Product type</b>            | Primary Antibody                           |
| <b>Code</b>                    | BT-AP10064                                 |
| <b>Host</b>                    | Rabbit                                     |
| <b>Isotype</b>                 | IgG  |
| <b>Size</b>                    | 20ul, 50ul, 100ul                          |
| <b>Immunogen</b>               | Synthesized peptide derived from human FMT |
| <b>Mol wt</b>                  | 42790                                      |
| <b>Species reactivity</b>      | Human, Mouse, Rat                          |
| <b>Clonality</b>               | Polyclonal                                 |
| <b>Recommended application</b> | WB   |
| <b>Concentration</b>           | 1 mg/ml                                    |
| <b>Full name</b>               | FMT  |
| <b>Synonyms</b>                | FMT  |

This product is for research use only, not for use in human, therapeutic or diagnostic procedure.

### Background

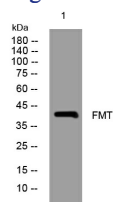
The protein encoded by this nuclear gene localizes to the mitochondrion| where it catalyzes the formylation of methionyl-tRNA.

### Recommended Dilution

WB: 1: 500 - 1: 2000

Not yet tested in other applications.

### Images



Western blot analysis of lysates from SH-SY5Y cells, primary antibody was diluted at 1:1000, 4°C overnight

### Storage

-20°C for 1 year

501 Changsheng S Rd, Nanhu Dist, Jiaxing, Zhejiang, China

Tel: 86 21 31007137 | E-mail: [save@bt-laboratory.com](mailto:save@bt-laboratory.com) | [www.bt-laboratory.com](http://www.bt-laboratory.com)