

HMG-14(Phospho Ser21) Polyclonal Antibody

Description

Product type	Primary Antibody
Code	BT-AP10079
Host	Rabbit
Isotype	IgG
Size	20ul, 50ul, 100ul
Immunogen	The antiserum was produced against synthesized peptide derived from human HMG14 around the phosphorylation site of Ser21. AA range:10-59
Mol wt	10659
Species reactivity	Human, Mouse, Rat
Clonality	Polyclonal
Recommended application	IHC-p, IF, ICC, ELISA
Concentration	1 mg/ml
Full name	Non-histone chromosomal protein HMG-14
Synonyms	Non-histone chromosomal protein HMG-14; HMGN1; HMG14; Non-histone chromosomal protein HMG-14; High mobility group nucleosome-binding domain-containing protein 1

This product is for research use only, not for use in human, therapeutic or diagnostic procedure.

Background

The protein encoded by this gene binds nucleosomal DNA and is associated with transcriptionally active chromatin. Along with a similar protein, HMG17, the encoded protein may help maintain an open chromatin configuration around transcribable genes.

Recommended Dilution

IHC-p: 1: 100 - 1: 300

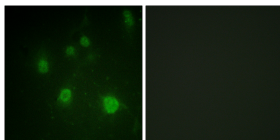
IF: 1: 200 - 1: 1000

ICC: 1: 200 - 1: 1000

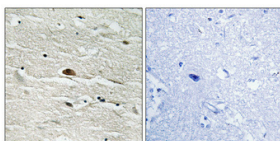
ELISA: 1: 10000

Not yet tested in other applications.

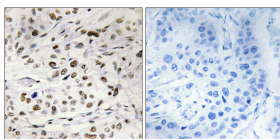
Images



Immunofluorescence analysis of COS7 cells, using HMG14 (Phospho-Ser21) Antibody. The picture on the right is blocked with the phospho peptide.



Immunohistochemical analysis of paraffin-embedded Human brain. Antibody was diluted at 1:100(4°C overnight). High-pressure and temperature Tris-EDTA,pH8.0 was used for antigen retrieval. Negative control (right) obtained from antibody was pre-absorbed by immunogen peptide.



Immunohistochemistry analysis of paraffin-embedded human breast carcinoma, using HMG14 (Phospho-Ser21) Antibody. The picture on the right is blocked with the phospho peptide.

Storage

-20°C for 1 year

501 Changsheng S Rd, Nanhu Dist, Jiaxing, Zhejiang, China

Tel: 86 21 31007137 | E-mail: save@bt-laboratory.com | www.bt-laboratory.com