

FSD1L Rabbit Polyclonal Antibody

Description

Product type	Primary Antibody
Code	BT-AP10090
Host	Rabbit
Isotype	IgG
Size	100ul, 50ul, 20ul
Immunogen	Synthesized peptide derived from human FSD1L
Mol wt	58300
Species reactivity	Human, Mouse
Clonality	Polyclonal
Recommended application	WB
Concentration	1 mg/ml
Full name	FSD1L
Synonyms	FSD1L

This product is for research use only, not for use in human, therapeutic or diagnostic procedure.

Background

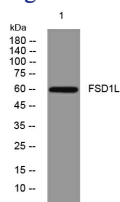
N/A

Recommended Dilution

WB: 1: 500 - 1: 2000

Not yet tested in other applications.

Images



Western blot analysis of lysates from PC-12 cells, primary antibody was diluted at 1:1000, 4°C overnight

Storage

-20°C for 1 year

501 Changsheng S Rd, Nanhu Dist, Jiaxing, Zhejiang, China

Tel: 86 21 31007137 | E-mail: save@bt-laboratory.com | www.bt-laboratory.com