

## FUCO2 Rabbit Polyclonal Antibody

### Description

Product type	Primary Antibody
Code	BT-AP10095
Host	Rabbit
Isotype	IgG
Size	100ul, 50ul, 20ul
Immunogen	Synthesized peptide derived from human FUCO2
Mol wt	51370
Species reactivity	Human, Mouse, Rat
Clonality	Polyclonal
Recommended application	WB
Concentration	1 mg/ml
Full name	FUCO2
Synonyms	FUCO2

This product is for research use only, not for use in human, therapeutic or diagnostic procedure.

### Background

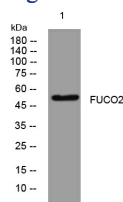
This gene encodes a plasma alpha-L-fucosidase which represents 10-20% of the total cellular fucosidase activity. The protein is a member of the glycosyl hydrolase 29 family and catalyzes the hydrolysis of the alpha-1|6-linked fucose joined to the reducing-end N-acetylglucosamine of the carbohydrate moieties of glycoproteins. This enzyme is essential for Helicobacter pylori adhesion to human gastric cancer cells.

### Recommended Dilution

WB: 1: 500 - 1: 2000

Not yet tested in other applications.

### Images



Western blot analysis of lysates from MCF-7 cells, primary antibody was diluted at 1:1000, 4°C overnight

### Storage

-20°C for 1 year

501 Changsheng S Rd, Nanhu Dist, Jiaxing, Zhejiang, China

Tel: 86 21 31007137 | E-mail: [save@bt-laboratory.com](mailto:save@bt-laboratory.com) | [www.bt-laboratory.com](http://www.bt-laboratory.com)