

## GALC Rabbit Polyclonal Antibody

### Description

Product type	Primary Antibody
Code	BT-AP10116
Host	Rabbit
Isotype	IgG
Size	100ul, 50ul, 20ul
Immunogen	Synthesized peptide derived from human GALC
Mol wt	75350
Species reactivity	Human, Mouse
Clonality	Polyclonal
Recommended application	WB
Concentration	1 mg/ml
Full name	GALC
Synonyms	GALC

This product is for research use only, not for use in human, therapeutic or diagnostic procedure.

### Background

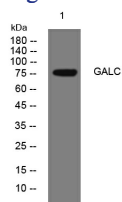
This gene encodes a lysosomal protein which hydrolyzes the galactose ester bonds of galactosylceramide| galactosylsphingosine| lactosylceramide| and monogalactosyldiglyceride. Mutations in this gene have been associated with Krabbe disease| also known as globoid cell leukodystrophy. Alternate transcriptional splice variants| encoding different isoforms| have been characterized.

### Recommended Dilution

WB: 1: 500 - 1: 2000

Not yet tested in other applications.

### Images



Western blot analysis of lysates from HpeG2 cells, primary antibody was diluted at 1:1000, 4°C overnight

### Storage

-20°C for 1 year

501 Changsheng S Rd, Nanhu Dist, Jiaxing, Zhejiang, China

Tel: 86 21 31007137 | E-mail: [save@bt-laboratory.com](mailto:save@bt-laboratory.com) | [www.bt-laboratory.com](http://www.bt-laboratory.com)