

GATM Rabbit Polyclonal Antibody

Description

Product type	Primary Antibody
Code	BT-AP10128
Host	Rabbit
Isotype	IgG
Size	100ul, 50ul, 20ul
Immunogen	Synthesized peptide derived from human GATM
Mol wt	46530
Species reactivity	Human, Mouse, Rat
Clonality	Polyclonal
Recommended application	WB
Concentration	1 mg/ml
Full name	GATM
Synonyms	GATM

This product is for research use only, not for use in human, therapeutic or diagnostic procedure.

Background

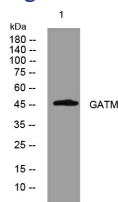
This gene encodes a mitochondrial enzyme that belongs to the amidinotransferase family. This enzyme is involved in creatine biosynthesis| whereby it catalyzes the transfer of a guanido group from L-arginine to glycine| resulting in guanidinoacetic acid| the immediate precursor of creatine. Mutations in this gene cause arginine:glycine amidinotransferase deficiency| an inborn error of creatine synthesis characterized by mental retardation| language impairment| and behavioral disorders.

Recommended Dilution

WB: 1: 500 - 1: 2000

Not yet tested in other applications.

Images



Western blot analysis of lysates from K562 cells, primary antibody was diluted at 1:1000, 4°C overnight

Storage

-20°C for 1 year