

## GDF11 Rabbit Polyclonal Antibody

### Description

Product type	Primary Antibody
Code	BT-AP10139
Host	Rabbit
Isotype	IgG
Size	100ul, 50ul, 20ul
Immunogen	Synthesized peptide derived from human GDF11
Mol wt	44770
Species reactivity	Human, Mouse, Rat
Clonality	Polyclonal
Recommended application	WB
Concentration	1 mg/ml
Full name	GDF11
Synonyms	GDF11

This product is for research use only, not for use in human, therapeutic or diagnostic procedure.

### Background

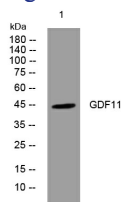
This gene encodes a secreted ligand of the TGF-beta (transforming growth factor-beta) superfamily of proteins. Ligands of this family bind various TGF-beta receptors leading to recruitment and activation of SMAD family transcription factors that regulate gene expression. The encoded preproprotein is proteolytically processed to generate each subunit of the disulfide-linked homodimer. This protein plays a role in the development of the nervous and other organ systems and may regulate aging.

### Recommended Dilution

WB: 1: 500 - 1: 2000

Not yet tested in other applications.

### Images



Western blot analysis of lysates from A549 cells, primary antibody was diluted at 1:1000, 4°C overnight

### Storage

-20°C for 1 year