

GEN Rabbit Polyclonal Antibody

Description

Product type	Primary Antibody
Code	BT-AP10142
Host	Rabbit
Isotype	IgG
Size	100ul, 50ul, 20ul
Immunogen	Synthesized peptide derived from human GEN
Mol wt	99880
Species reactivity	Human, Mouse
Clonality	Polyclonal
Recommended application	WB
Concentration	1 mg/ml
Full name	GEN
Synonyms	GEN

This product is for research use only, not for use in human, therapeutic or diagnostic procedure.

Background

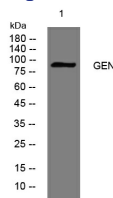
This gene encodes a member of the Rad2/xeroderma pigmentosum group G nuclease family| whose members are characterized by N-terminal and internal xeroderma pigmentosum group G nuclease domains followed by helix-hairpin-helix domains and disordered C-terminal domains. The protein encoded by this gene is involved in resolution of Holliday junctions| which are intermediate four-way structures that covalently link DNA during homologous recombination and double-strand break repair. The protein resolves Holliday junctions by creating dual incisions across the junction to produce nicked duplex products that can be ligated. In addition| this protein has been found to localize to centrosomes where it has been implicated in regulation of centrosome integrity. Alternative splicing results in multiple transcript variants.

Recommended Dilution

WB: 1: 500 - 1: 2000

Not yet tested in other applications.

Images



Western blot analysis of lysates from Jarkat cells, primary antibody was diluted at 1:1000, 4°C overnight

Storage

-20°C for 1 year