

HPGDS Polyclonal Antibody

Description

Product type	Primary Antibody
Code	BT-AP10145
Host	Rabbit
Isotype	IgG
Size	20ul, 50ul, 100ul
Immunogen	Synthesized peptide derived from part region of human protein
Mol wt	N/A
Species reactivity	Human, Rat, Mouse
Clonality	Polyclonal
Recommended application	WB, ELISA
Concentration	1 mg/ml
Full name	Hematopoietic prostaglandin D synthase
Synonyms	Hematopoietic prostaglandin D synthase ;H-PGDS;EC 5.3.99.2;GST class-sigma;Glutathione S-transferase;EC 2.5.1.18;Glutathione-dependent PGD synthase;Glutathione-requiring prostaglandin D sy

This product is for research use only, not for use in human, therapeutic or diagnostic procedure.

Background

Prostaglandin-D synthase is a sigma class glutathione-S-transferase family member. The enzyme catalyzes the conversion of PGH₂ to PGD₂ and plays a role in the production of prostanoids in the immune system and mast cells. The presence of this enzyme can be used to identify the differentiation stage of human megakaryocytes.

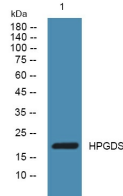
Recommended Dilution

WB: 1: 500 - 1: 2000

ELISA: 1: 5000 - 1: 20000

Not yet tested in other applications.

Images



Western blot analysis of lysates from DU145 cells, primary antibody was diluted at 1:1000, 4°C overnight

Storage

-20°C for 1 year