

## HPLN1 Polyclonal Antibody

### Description

<b>Product type</b>	Primary Antibody
<b>Code</b>	BT-AP10147
<b>Host</b>	Rabbit
<b>Isotype</b>	IgG
<b>Size</b>	20ul, 50ul, 100ul
<b>Immunogen</b>	Synthesized peptide derived from human HPLN1
<b>Mol wt</b>	N/A
<b>Species reactivity</b>	Human, Mouse, Rat
<b>Clonality</b>	Polyclonal
<b>Recommended application</b>	IHC-p, IF, WB
<b>Concentration</b>	1 mg/ml
<b>Full name</b>	HPLN1
<b>Synonyms</b>	HPLN1; Hyaluronan and proteoglycan link protein 1; Cartilage-linking protein 1; Cartilage-link protein; Proteoglycan link protein

This product is for research use only, not for use in human, therapeutic or diagnostic procedure.

### Background

Stabilizes the aggregates of proteoglycan monomers with hyaluronic acid in the extracellular cartilage matrix. Belongs to the HAPLN family. Contains 1 Ig-like V-type (immunoglobulin-like) domain. Contains 2 Link domains. Tissue specificity: Widely expressed. Weakly expressed in the brain.

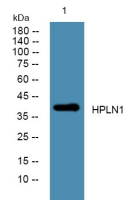
### Recommended Dilution

WB: 1: 500 - 1: 2000

IHC-p: 1: 50 - 1: 200

Not yet tested in other applications.

### Images



Western blot analysis of lysates from HCT116 cells, primary antibody was diluted at 1:1000, 4°C overnight

### Storage

-20°C for 1 year