

HPLN4 Polyclonal Antibody

Description

Product type	Primary Antibody
Code	BT-AP10149
Host	Rabbit
Isotype	IgG
Size	20ul, 50ul, 100ul
Immunogen	Synthesized peptide derived from human protein . at AA range: 90-170
Mol wt	N/A
Species reactivity	Human, Mouse
Clonality	Polyclonal
Recommended application	WB, ELISA
Concentration	1 mg/ml
Full name	Hyaluronan and proteoglycan link protein 4
Synonyms	Hyaluronan and proteoglycan link protein 4 ;Brain link protein 2

This product is for research use only, not for use in human, therapeutic or diagnostic procedure.

Background

Binds to hyaluronic acid and may be involved in formation of the extracellular matrix.,Belongs to the HAPLN family.,Contains 1 Ig-like C2- (immunoglobulin-like) domain.,Contains 2 Link domains.,tissue specificity:Expressed predominantly in brain.,

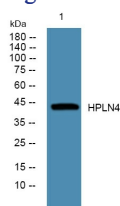
Recommended Dilution

WB: 1: 500 - 1: 2000

ELISA: 1: 5000 - 1: 20000

Not yet tested in other applications.

Images



Western blot analysis of lysates from K562 cells, primary antibody was diluted at 1:1000, 4°C overnight

Storage

-20°C for 1 year