

Hrs(Phospho Tyr216) Polyclonal Antibody

Description

Product type	Primary Antibody
Code	BT-AP10156
Host	Rabbit
Isotype	IgG
Size	20ul, 50ul, 100ul
Immunogen	Synthesized phospho-peptide around the phosphorylation site of human Hrs (phospho Tyr216)
Mol wt	86192
Species reactivity	Human, Mouse, Rat
Clonality	Polyclonal
Recommended application	WB, ELISA
Concentration	1 mg/ml
Full name	Hepatocyte growth factor-regulated tyrosine kinase substrate
Synonyms	Hepatocyte growth factor-regulated tyrosine kinase substrate; HGS; HRS; Hepatocyte growth factor-regulated tyrosine kinase substrate; Hrs; Protein pp110

This product is for research use only, not for use in human, therapeutic or diagnostic procedure.

Background

The protein encoded by this gene regulates endosomal sorting and plays a critical role in the recycling and degradation of membrane receptors. The encoded protein sorts monoubiquitinated membrane proteins into the multivesicular body, targeting these proteins for lysosome-dependent degradation.

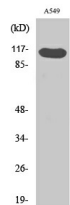
Recommended Dilution

WB: 1: 500 - 1: 2000

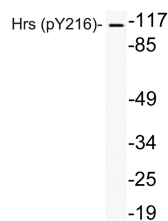
ELISA: 1: 10000

Not yet tested in other applications.

Images



Western Blot analysis of various cells using Phospho-Hrs (Y216) Polyclonal Antibody



Western blot analysis of lysates from A549 cells, using phospho-Hrs (Phospho-Tyr216) antibody.

Storage

-20°C for 1 year

501 Changsheng S Rd, Nanhu Dist, Jiaxing, Zhejiang, China

Tel: 86 21 31007137 | E-mail: save@bt-laboratory.com | www.bt-laboratory.com