

GGT2 Rabbit Polyclonal Antibody

Description

Product type	Primary Antibody
Code	BT-AP10160
Host	Rabbit
Isotype	IgG
Size	100ul, 50ul, 20ul
Immunogen	Synthesized peptide derived from human GGT2
Mol wt	N/A
Species reactivity	Human, Rat, Mouse
Clonality	Polyclonal
Recommended application	WB
Concentration	1 mg/ml
Full name	GGT2
Synonyms	GGT2; Gamma-glutamyltranspeptidase 2; GGT 2; EC 2.3.2.2; Gamma-glutamyltransferase 2; Glutathione hydrolase 2; EC 3.4.19.13; Gamma-glutamyltranspeptidase 2 heavy chain; Gamma-glutamyltranspeptidase 2 light chain;

This product is for research use only, not for use in human, therapeutic or diagnostic procedure.

Background

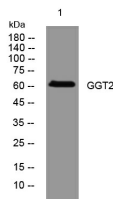
GGT2 belongs to the gamma-glutamyltransferase (GGT; EC 2.3.2.2) gene family. GGT is a membrane-bound extracellular enzyme that cleaves gamma-glutamyl peptide bonds in glutathione and other peptides and transfers the gamma-glutamyl moiety to acceptors. GGT is also key to glutathione homeostasis because it provides substrates for glutathione synthesis (Heisterkamp et al. 2008)

Recommended Dilution

WB: 1: 500 - 1: 2000

Not yet tested in other applications.

Images



Western blot analysis of lysates from AD293 cells, primary antibody was diluted at 1:1000, 4°C overnight

Storage

-20°C for 1 year