

## HSF1(Phospho Ser303) Polyclonal Antibody

### Description

<b>Product type</b>	Primary Antibody
<b>Code</b>	BT-AP10171
<b>Host</b>	Rabbit
<b>Isotype</b>	IgG
<b>Size</b>	20ul, 50ul, 100ul
<b>Immunogen</b>	The antiserum was produced against synthesized peptide derived from human HSF1 around the phosphorylation site of Ser303. AA range:270-319
<b>Mol wt</b>	30603
<b>Species reactivity</b>	Human, Mouse
<b>Clonality</b>	Polyclonal
<b>Recommended application</b>	WB, IHC-p, IF, ICC, ELISA
<b>Concentration</b>	1 mg/ml
<b>Full name</b>	Heat shock factor protein 1
<b>Synonyms</b>	Heat shock factor protein 1; HSF1; HSTF1; Heat shock factor protein 1; HSF 1; Heat shock transcription factor 1; HSTF 1

This product is for research use only, not for use in human, therapeutic or diagnostic procedure.

### Background

The product of this gene is a transcription factor that is rapidly induced after temperature stress and binds heat shock promoter elements (HSE). This protein plays a role in the regulation of lifespan. Expression of this gene is repressed by phosphorylation, which promotes binding by heat shock protein 90.

### Recommended Dilution

WB: 1: 500 - 1: 2000

IHC-p: 1: 100 - 1: 300

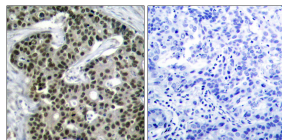
IF: 1: 200 - 1: 1000

ICC: 1: 200 - 1: 1000

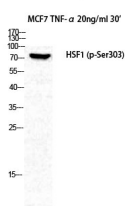
ELISA: 1: 20000

Not yet tested in other applications.

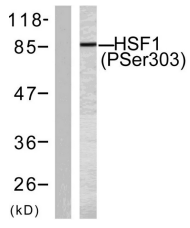
### Images



Immunohistochemistry analysis of paraffin-embedded human breast carcinoma, using HSF1 (Phospho-Ser303) Antibody. The picture on the right is blocked with the phospho peptide.



Western Blot analysis of MCF7+TNF cells using Phospho-HSF1 (S303) Polyclonal Antibody diluted at 1:1000



Western blot analysis of lysates from MCF7 cells treated with TNF-alpha 20ng/ml 30', using HSF1 (Phospho-Ser303) Antibody. The lane on the left is blocked with the phospho peptide.

### Storage

-20°C for 1 year

501 Changsheng S Rd, Nanhu Dist, Jiaxing, Zhejiang, China

Tel: 86 21 31007137 | E-mail: [save@bt-laboratory.com](mailto:save@bt-laboratory.com) | [www.bt-laboratory.com](http://www.bt-laboratory.com)