

HSL(Phospho Ser552) Polyclonal Antibody

Description

Product type	Primary Antibody
Code	BT-AP10181
Host	Rabbit
Isotype	IgG
Size	20ul, 50ul, 100ul
Immunogen	The antiserum was produced against synthesized peptide derived from human HSL around the phosphorylation site of Ser552. AA range:518-567
Mol wt	116568
Species reactivity	Human, Mouse, Rat
Clonality	Polyclonal
Recommended application	WB, IHC-p, IF, ELISA
Concentration	1 mg/ml
Full name	Hormone-sensitive lipase
Synonyms	Hormone-sensitive lipase; LIPE; Hormone-sensitive lipase; HSL

This product is for research use only, not for use in human, therapeutic or diagnostic procedure.

Background

The protein encoded by this gene has a long and a short form, generated by use of alternative translational start codons. The long form is expressed in steroidogenic tissues such as testis, where it converts cholesteryl esters to free cholesterol for steroid hormone production. The short form is expressed in adipose tissue, among others, where it hydrolyzes stored triglycerides to free fatty acids.

Recommended Dilution

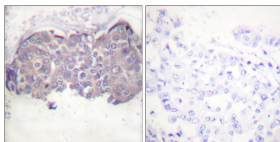
WB: 1: 500 - 1: 2000

IHC-p: 1: 100 - 1: 300

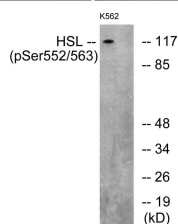
ELISA: 1: 5000

Not yet tested in other applications.

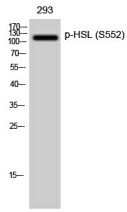
Images



Immunohistochemistry analysis of paraffin-embedded human breast carcinoma, using HSL (Phospho-Ser552) Antibody. The picture on the right is blocked with the phospho peptide.



Western Blot analysis of 293 cells using Phospho-HSL (S552) Polyclonal Antibody diluted at 1:500



Western blot analysis of lysates from K562 cells, using HSL (Phospho-Ser552) Antibody. The lane on the right is blocked with the phospho peptide.

Storage

-20°C for 1 year

501 Changsheng S Rd, Nanhu Dist, Jiaxing, Zhejiang, China

Tel: 86 21 31007137 | E-mail: save@bt-laboratory.com | www.bt-laboratory.com