

HSP20(Phospho Ser16) Polyclonal Antibody

Description

Product type	Primary Antibody
Code	BT-AP10192
Host	Rabbit
Isotype	IgG
Size	20ul, 50ul, 100ul
Immunogen	The antiserum was produced against synthesized peptide derived from human HSP20 around the phosphorylation site of Ser16. AA range:5-54
Mol wt	17136
Species reactivity	Human, Mouse, Rat
Clonality	Polyclonal
Recommended application	IHC-p, IF, ICC, ELISA
Concentration	1 mg/ml
Full name	Heat shock protein beta-6
Synonyms	Heat shock protein beta-6; HSPB6; Heat shock protein beta-6; HspB6; Heat shock 20 kDa-like protein p20

This product is for research use only, not for use in human, therapeutic or diagnostic procedure.

Background

Recommended Dilution

IHC-p: 1: 100 - 1: 300

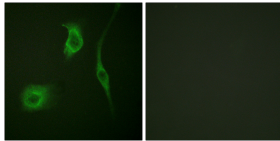
IF: 1: 200 - 1: 1000

ICC: 1: 200 - 1: 1000

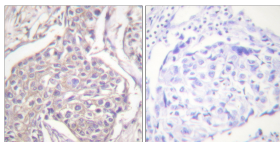
ELISA: 1: 5000

Not yet tested in other applications.

Images



Immunofluorescence analysis of HeLa cells, using HSP20 (Phospho-Ser16) Antibody. The picture on the right is blocked with the phospho peptide.



Immunohistochemistry analysis of paraffin-embedded human breast carcinoma, using HSP20 (Phospho-Ser16) Antibody. The picture on the right is blocked with the phospho peptide.

Storage

-20°C for 1 year