

HSP40 Rabbit Polyclonal Antibody

Description

Product type	Primary Antibody
Code	BT-AP10200
Host	Rabbit
Isotype	IgG
Size	20ul, 50ul, 100ul
Immunogen	Recombinant Protein of HSP40
Mol wt	N/A
Species reactivity	Human, Mouse, Rat
Clonality	Polyclonal
Recommended application	WB, IHC-p, IF
Concentration	1 mg/ml
Full name	DnaJ homolog subfamily B member 1
Synonyms	DnaJ homolog subfamily B member 1 ;DnaJ protein homolog 1;Heat shock 40 kDa protein 1;HSP40;Heat shock protein 40;Human DnaJ protein 1;hDj-1; DnaJ homolog subfamily B member 1; DnaJ protein homolog 1; Heat shock 40 kDa protein 1; HSP40; Heat shock protein 40; Human DnaJ protein 1; hDj-1

This product is for research use only, not for use in human, therapeutic or diagnostic procedure.

Background

This gene encodes a member of the DnaJ or Hsp40 (heat shock protein 40 kD) family of proteins. DNAJ family members are characterized by a highly conserved amino acid stretch called the 'J-domain' and function as one of the two major classes of molecular chaperones involved in a wide range of cellular events, such as protein folding and oligomeric protein complex assembly. The encoded protein is a molecular chaperone that stimulates the ATPase activity of Hsp70 heat-shock proteins in order to promote protein folding and prevent misfolded protein aggregation. Alternative splicing results in multiple transcript variants.

Recommended Dilution

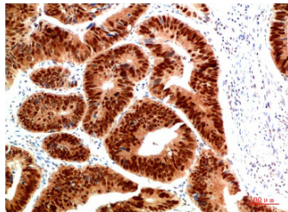
WB: 1: 500 - 1: 2000

IHC-p: 1: 50 - 1: 300

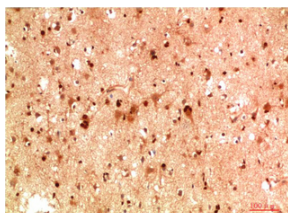
ELISA: 1: 20000

Not yet tested in other applications.

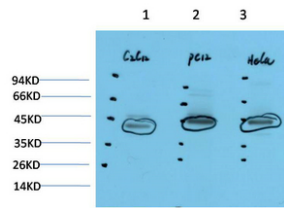
Images



Immunohistochemical analysis of paraffin-embedded Human Colon Carcinoma Tissue using HSP40 Rabbit pAb diluted at 1:200



Immunohistochemical analysis of paraffin-embedded Human Brain Tissue using HSP40 Rabbit pAb diluted at 1:200



Western blot analysis of 1) C2C12 Cell Lysate, 2)PC12 Cell Lysate, 3) HeLa Cell Lysate using HSP40
Rabbit pAb diluted at 1:1000.

Storage

-20°C for 1 year

501 Changsheng S Rd, Nanhu Dist, Jiaxing, Zhejiang, China

Tel: 86 21 31007137 | E-mail: save@bt-laboratory.com | www.bt-laboratory.com