

GNAS2 Rabbit Polyclonal Antibody

Description

Product type	Primary Antibody
Code	BT-AP10202
Host	Rabbit
Isotype	IgG
Size	100ul, 50ul, 20ul
Immunogen	Synthesized peptide derived from human GNAS2
Mol wt	43340
Species reactivity	Human, Mouse, Rat
Clonality	Polyclonal
Recommended application	WB
Concentration	1 mg/ml
Full name	GNAS2
Synonyms	GNAS2

This product is for research use only, not for use in human, therapeutic or diagnostic procedure.

Background

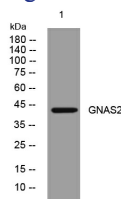
This locus has a highly complex imprinted expression pattern. It gives rise to maternally| paternally| and biallelically expressed transcripts that are derived from four alternative promoters and 5' exons. Some transcripts contain a differentially methylated region (DMR) at their 5' exons| and this DMR is commonly found in imprinted genes and correlates with transcript expression. An antisense transcript is produced from an overlapping locus on the opposite strand. One of the transcripts produced from this locus| and the antisense transcript| are paternally expressed noncoding RNAs| and may regulate imprinting in this region. In addition| one of the transcripts contains a second overlapping ORF| which encodes a structurally unrelated protein - Alex. Alternative splicing of downstream exons is also observed| which results in different forms of the stimulatory G-protein alpha subunit| a key element of the classical signal transduction pathway linking receptor-ligand interactions with the activation of adenylyl cyclase and a variety of cellular reponses. Multiple transcript variants encoding different isoforms have been found for this gene. Mutations in this gene result in pseudohypoparathyroidism type 1a| pseudohypoparathyroidism type 1b| Albright hereditary osteodystrophy| pseudopseudohypoparathyroidism| McCune-Albright syndrome| progressive osseus heteroplasia| polyostotic fibrous dysplasia of bone| and some pituitary tumors.

Recommended Dilution

WB: 1: 500 - 1: 2000

Not yet tested in other applications.

Images



Western blot analysis of lysates from Jarkat cells, primary antibody was diluted at 1:1000, 4°C overnight

Storage

-20°C for 1 year

501 Changsheng S Rd, Nanhu Dist, Jiaxing, Zhejiang, China

Tel: 86 21 31007137 | E-mail: save@bt-laboratory.com | www.bt-laboratory.com