

HSP90A Polyclonal Antibody

Description

| | |
|--------------------------------|---|
| Product type | Primary Antibody |
| Code | BT-AP10210 |
| Host | Rabbit |
| Isotype | IgG |
| Size | 20ul, 50ul, 100ul |
| Immunogen | Recombinant Protein of HSP90A |
| Mol wt | N/A |
| Species reactivity | Human, Mouse, Rat |
| Clonality | Polyclonal |
| Recommended application | WB, IHC-p, IF |
| Concentration | |
| Full name | Heat shock protein HSP 90-alpha |
| Synonyms | Heat shock protein HSP 90-alpha; HSP90AA1; HSP90A; HSPC1; HSPCA; Heat shock protein HSP 90-alpha; Heat shock 86 kDa; HSP 86; HSP86; Renal carcinoma antigen NY-REN-38 |

This product is for research use only, not for use in human, therapeutic or diagnostic procedure.

Background

The protein encoded by this gene is an inducible molecular chaperone that functions as a homodimer. The encoded protein aids in the proper folding of specific target proteins by use of an ATPase activity that is modulated by co-chaperones. Two transcript variants encoding different isoforms have been found for this gene.

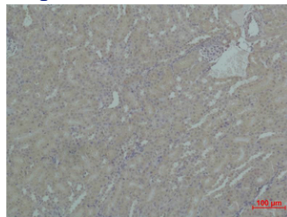
Recommended Dilution

WB: 1: 1000 - 1: 2000

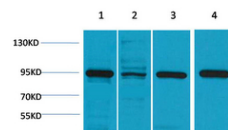
IHC: 1: 200 - 500

Not yet tested in other applications.

Images



Immunohistochemical analysis of paraffin-embedded Mouse Kidney Tissue using HSP90A Polyclonal Antibody.



Western blot analysis of 1) HeLa, 2) 3T3, 3) Mouse Brain, 4) Rat Brain using HSP90A Polyclonal Antibody. Secondary antibody was diluted at 1:20000

Storage

-20°C for 1 year