

## HSP90 alpha Rabbit Polyclonal Antibody

### Description

<b>Product type</b>	Primary Antibody
<b>Code</b>	BT-AP10211
<b>Host</b>	Rabbit
<b>Isotype</b>	IgG
<b>Size</b>	20ul, 50ul, 100ul
<b>Immunogen</b>	Recombinant Protein of HSP90 $\alpha$
<b>Mol wt</b>	N/A
<b>Species reactivity</b>	Human, Mouse, Rat
<b>Clonality</b>	Polyclonal
<b>Recommended application</b>	IHC-p, IF
<b>Concentration</b>	1 mg/ml
<b>Full name</b>	Heat shock protein HSP 90-alpha
<b>Synonyms</b>	Heat shock protein HSP 90-alpha ;Heat shock 86 kDa;HSP 86;HSP86;Renal carcinoma antigen NY-REN-38; Heat shock protein HSP 90-alpha; Heat shock 86 kDa; HSP 86; HSP86; Renal carcinoma antigen NY-REN-38

This product is for research use only, not for use in human, therapeutic or diagnostic procedure.

### Background

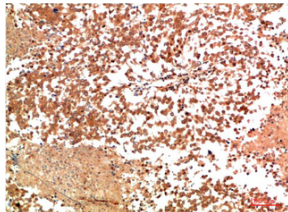
The protein encoded by this gene is an inducible molecular chaperone that functions as a homodimer. The encoded protein aids in the proper folding of specific target proteins by use of an ATPase activity that is modulated by co-chaperones. Two transcript variants encoding different isoforms have been found for this gene.

### Recommended Dilution

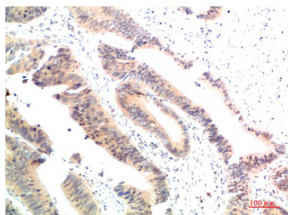
IHC-p: 1: 50 - 1: 300

Not yet tested in other applications.

### Images



Immunohistochemical analysis of paraffin-embedded Human Lung Carcinoma Tissue using HSP90 $\alpha$  Rabbit pAb diluted at 1:200



Immunohistochemical analysis of paraffin-embedded Human Colon Carcinoma Tissue using HSP90 $\alpha$  Rabbit pAb diluted at 1:200

## Storage

-20°C for 1 year

501 Changsheng S Rd, Nanhu Dist, Jiaxing, Zhejiang, China

Tel: 86 21 31007137 | E-mail: [save@bt-laboratory.com](mailto:save@bt-laboratory.com) | [www.bt-laboratory.com](http://www.bt-laboratory.com)