

## HSP90 beta(Phospho Ser226) Polyclonal Antibody

### Description

<b>Product type</b>	Primary Antibody
<b>Code</b>	BT-AP10212
<b>Host</b>	Rabbit
<b>Isotype</b>	IgG
<b>Size</b>	20ul, 50ul, 100ul
<b>Immunogen</b>	The antiserum was produced against synthesized peptide derived from human HSP90B around the phosphorylation site of Ser226. AA range:201-250
<b>Mol wt</b>	83133
<b>Species reactivity</b>	Human, Mouse, Rat
<b>Clonality</b>	Polyclonal
<b>Recommended application</b>	WB, IHC-p, IF, ICC, ELISA
<b>Concentration</b>	1 mg/ml
<b>Full name</b>	Heat shock protein HSP 90-beta
<b>Synonyms</b>	Heat shock protein HSP 90-beta; HSP90AB1; HSP90B; HSPC2; HSPCB; Heat shock protein HSP 90-beta; HSP 90; Heat shock 84 kDa; HSP 84; HSP84

**This product is for research use only, not for use in human, therapeutic or diagnostic procedure.**

### Background

This gene encodes a member of the heat shock protein 90 family; these proteins are involved in signal transduction, protein folding and degradation and morphological evolution. This gene encodes the constitutive form of the cytosolic 90 kDa heat-shock protein and is thought to play a role in gastric apoptosis and inflammation. Alternative splicing results in multiple transcript variants. Pseudogenes have been identified on multiple chromosomes.

### Recommended Dilution

WB: 1: 500 - 1: 2000

IHC-p: 1: 100 - 1: 300

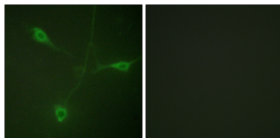
IF: 1: 200 - 1: 1000

ICC: 1: 200 - 1: 1000

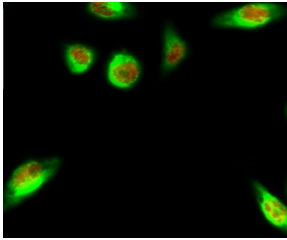
ELISA: 1: 10000

Not yet tested in other applications.

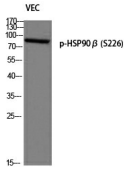
### Images



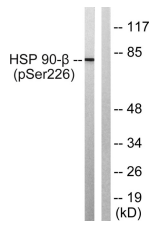
Immunofluorescence analysis of HeLa cell. HSP90 $\beta$  (phospho Ser226) Polyclonal Antibody(Red) was diluted at 1:200(4°C overnight). CK7 Monoclonal Antibody(12D7)(Green) was diluted at 1:200(4°C overnight).



Immunofluorescence analysis of NIH/3T3 cells, using HSP90B (Phospho-Ser226) Antibody. The picture on the right is blocked with the phospho peptide.



Western blot analysis of VEC using p-HSP90 $\beta$  (S226) antibody.



Western blot analysis of lysates from A549 cells treated with serum 20% 15', using HSP90B (Phospho-Ser226) Antibody. The lane on the right is blocked with the phospho peptide.

### Storage

-20°C for 1 year

501 Changsheng S Rd, Nanhu Dist, Jiaxing, Zhejiang, China

Tel: 86 21 31007137 | E-mail: [save@bt-laboratory.com](mailto:save@bt-laboratory.com) | [www.bt-laboratory.com](http://www.bt-laboratory.com)