

HSPB7 Polyclonal Antibody

Description

Product type	Primary Antibody
Code	BT-AP10217
Host	Rabbit
Isotype	IgG
Size	20ul, 50ul, 100ul
Immunogen	Synthesized peptide derived from human protein . at AA range: 100-180
Mol wt	N/A
Species reactivity	Human, Mouse
Clonality	Polyclonal
Recommended application	WB, ELISA
Concentration	1 mg/ml
Full name	Heat shock protein beta-7
Synonyms	Heat shock protein beta-7 ;HspB7;Cardiovascular heat shock protein;cvHsp

This product is for research use only, not for use in human, therapeutic or diagnostic procedure.

Background

Belongs to the small heat shock protein (HSP20) family.,subunit:Interacts with C-terminal domain of actin-binding protein 280.,tissue specificity:Isoform 1 is highly expressed in adult and fetal heart, skeletal muscle, and at a much lower levels in adipose tissue and in aorta. Undetectable in other tissues. Isoform 2 and isoform 3 are poorly detected in heart.,

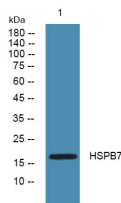
Recommended Dilution

WB: 1: 500 - 1: 2000

ELISA: 1: 5000 - 1: 20000

Not yet tested in other applications.

Images



Western blot analysis of lysates from DU145 cells, primary antibody was diluted at 1:1000, 4°C overnight

Storage

-20°C for 1 year