

GOGA1 Rabbit Polyclonal Antibody

Description

Product type	Primary Antibody
Code	BT-AP10224
Host	Rabbit
Isotype	IgG
Size	100ul, 50ul, 20ul
Immunogen	Synthesized peptide derived from human GOGA1
Mol wt	N/A
Species reactivity	Human, Mouse
Clonality	Polyclonal
Recommended application	WB
Concentration	1 mg/ml
Full name	GOGA1
Synonyms	GOGA1; Golgin subfamily A member 1; Golgin-97

This product is for research use only, not for use in human, therapeutic or diagnostic procedure.

Background

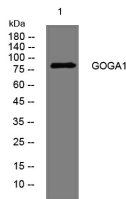
The Golgi apparatus| which participates in glycosylation and transport of proteins and lipids in the secretory pathway| consists of a series of stacked cisternae (flattened membrane sacs). Interactions between the Golgi and microtubules are thought to be important for the reorganization of the Golgi after it fragments during mitosis. This gene encodes one of the golgins| a family of proteins localized to the Golgi. This encoded protein is associated with Sjogren's syndrome.

Recommended Dilution

WB: 1: 500 - 1: 2000

Not yet tested in other applications.

Images



Western blot analysis of lysates from 3T3 cells, primary antibody was diluted at 1:1000, 4°C overnight

Storage

-20°C for 1 year