

I20L2 Polyclonal Antibody

Description

| | |
|--------------------------------|---|
| Product type | Primary Antibody |
| Code | BT-AP10255 |
| Host | Rabbit |
| Isotype | IgG |
| Size | 20ul, 50ul, 100ul |
| Immunogen | Synthesized peptide derived from part region of human protein |
| Mol wt | N/A |
| Species reactivity | Human, Rat, Mouse |
| Clonality | Polyclonal |
| Recommended application | WB, ELISA |
| Concentration | 1 mg/ml |
| Full name | Interferon-stimulated 20 kDa exonuclease-like 2 |
| Synonyms | Interferon-stimulated 20 kDa exonuclease-like 2 ;EC 3.1.-.- |

This product is for research use only, not for use in human, therapeutic or diagnostic procedure.

Background

This gene encodes a 3'-5' exoribonuclease that may be involved in the processing of the 12S pre-rRNA. Pseudogenes have been identified on chromosomes 6 and 11.

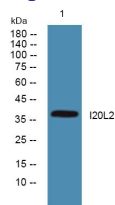
Recommended Dilution

WB: 1: 500 - 1: 2000

ELISA: 1: 5000 - 1: 20000

Not yet tested in other applications.

Images



Western blot analysis of lysates from SW480 cells, primary antibody was diluted at 1:1000, 4°C overnight

Storage

-20°C for 1 year