

## I22R2 Polyclonal Antibody

### Description

<b>Product type</b>	Primary Antibody
<b>Code</b>	BT-AP10257
<b>Host</b>	Rabbit
<b>Isotype</b>	IgG
<b>Size</b>	20ul, 50ul, 100ul
<b>Immunogen</b>	Synthesized peptide derived from part region of human protein
<b>Mol wt</b>	N/A
<b>Species reactivity</b>	Human, Rat, Mouse
<b>Clonality</b>	Polyclonal
<b>Recommended application</b>	WB, ELISA
<b>Concentration</b>	1 mg/ml
<b>Full name</b>	Interleukin-22 receptor subunit alpha-2
<b>Synonyms</b>	Interleukin-22 receptor subunit alpha-2 ;IL-22 receptor subunit alpha-2;IL-22R-alpha-2;IL-22RA2;Cytokine receptor class-II member 10;Cytokine receptor family 2 member 10;CRF2-10;Cytokine r

**This product is for research use only, not for use in human, therapeutic or diagnostic procedure.**

### Background

This gene encodes a member of the class II cytokine receptor family. The encoded soluble protein specifically binds to and inhibits interleukin 22 activity by blocking the interaction of interleukin 22 with its cell surface receptor. The encoded protein may be important in the regulation of inflammatory response, and has been implicated in the regulation of tumorigenesis in the colon. Alternative splicing results in multiple transcript variants encoding distinct isoforms.

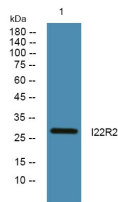
### Recommended Dilution

WB: 1: 500 - 1: 2000

ELISA: 1: 5000 - 1: 20000

Not yet tested in other applications.

### Images



Western blot analysis of lysates from PC12 cells, primary antibody was diluted at 1:1000, 4°C overnight

### Storage

-20°C for 1 year