

IBP5 Polyclonal Antibody

Description

Product type	Primary Antibody
Code	BT-AP10262
Host	Rabbit
Isotype	IgG
Size	20ul, 50ul, 100ul
Immunogen	Synthesized peptide derived from human protein . at AA range: 90-170
Mol wt	N/A
Species reactivity	Human, Mouse, Rat
Clonality	Polyclonal
Recommended application	WB, ELISA
Concentration	1 mg/ml
Full name	Insulin-like growth factor-binding protein 5
Synonyms	Insulin-like growth factor-binding protein 5 ;IBP-5;IGF-binding protein 5;IGFBP-5

This product is for research use only, not for use in human, therapeutic or diagnostic procedure.

Background

IGF-binding proteins prolong the half-life of the IGFs and have been shown to either inhibit or stimulate the growth promoting effects of the IGFs on cell culture. They alter the interaction of IGFs with their cell surface receptors.,Contains 1 IGFBP N-terminal domain.,Contains 1 thyroglobulin type-1 domain.,tissue specificity:Osteosarcoma, and at lower levels in liver, kidney and brain.,

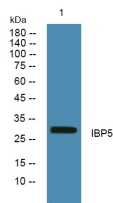
Recommended Dilution

WB: 1: 500 - 1: 2000

ELISA: 1: 5000 - 1: 20000

Not yet tested in other applications.

Images



Western blot analysis of lysates from A431 cells, primary antibody was diluted at 1:1000, 4°C overnight

Storage

-20°C for 1 year