

IBPL1 Polyclonal Antibody

Description

Product type	Primary Antibody
Code	BT-AP10263
Host	Rabbit
Isotype	IgG
Size	20ul, 50ul, 100ul
Immunogen	Synthesized peptide derived from part region of human protein
Mol wt	N/A
Species reactivity	Human, Mouse
Clonality	Polyclonal
Recommended application	WB, ELISA
Concentration	1 mg/ml
Full name	Insulin-like growth factor-binding protein-like 1
Synonyms	Insulin-like growth factor-binding protein-like 1 ;IGFBP-related protein 10;Insulin-like growth factor-binding-related protein 4;IGFBP-rP4

This product is for research use only, not for use in human, therapeutic or diagnostic procedure.

Background

IGF-binding proteins prolong the half-life of IGFs and have been shown to either inhibit or stimulate the growth promoting effects of the IGFs in cell culture. They alter the interaction of IGFs with their cell surface receptors (By similarity). May be a putative tumor suppressor protein.,induction:Down-regulated in multiple tumors.,Contains 1 Ig-like C2-type (immunoglobulin-like) domain.,Contains 1 IGFBP N-terminal domain.,Contains 1 Kazal-like domain.,tissue specificity:Expressed at the highest level in both brain and testis, with lower levels in the prostate, bladder and lung.,

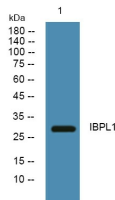
Recommended Dilution

WB: 1: 500 - 1: 2000

ELISA: 1: 5000 - 1: 20000

Not yet tested in other applications.

Images



Western blot analysis of lysates from SW480 cells, primary antibody was diluted at 1:1000, 4°C overnight

Storage

-20°C for 1 year