

IL-1RI(Phospho Tyr496) Polyclonal Antibody

Description

Product type	Primary Antibody
Code	BT-AP10304
Host	Rabbit
Isotype	IgG
Size	20ul, 50ul, 100ul
Immunogen	The antiserum was produced against synthesized peptide derived from human IL-1Ralpha/CD121alpha around the phosphorylation site of Tyr496. AA range:471-520
Mol wt	65402
Species reactivity	Human, Mouse, Rat
Clonality	Polyclonal
Recommended application	WB, IHC-p, IF, ELISA
Concentration	1 mg/ml
Full name	Interleukin-1 receptor type 1
Synonyms	Interleukin-1 receptor type 1; IL1R1; IL1R; IL1RA; IL1RT1; Interleukin-1 receptor type 1; IL-1R-1; IL-1RT-1; IL-1RT1; CD121 antigen-like family member A; Interleukin-1 receptor alpha; IL-1R-alpha; Interleukin-1 receptor type I; p80; CD antigen CD121a

This product is for research use only, not for use in human, therapeutic or diagnostic procedure.

Background

This gene encodes a cytokine receptor that belongs to the interleukin-1 receptor family. The encoded protein is a receptor for interleukin-1 alpha, interleukin-1 beta, and interleukin-1 receptor antagonist. It is an important mediator involved in many cytokine-induced immune and inflammatory responses. This gene is located in a cluster of related cytokine receptor genes on chromosome 2q12.

Recommended Dilution

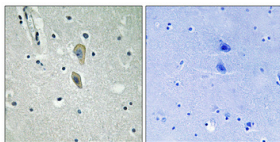
WB: 1: 500 - 1: 2000

IHC-p: 1: 100 - 1: 300

ELISA: 1: 10000

Not yet tested in other applications.

Images



Immunohistochemical analysis of paraffin-embedded Human brain. Antibody was diluted at 1:100(4°C overnight). High-pressure and temperature Tris-EDTA,pH8.0 was used for antigen retrieval. Negative control (right) obtained from antibody was pre-absorbed by immunogen peptide.

Storage

-20°C for 1 year