

GTD2A Rabbit Polyclonal Antibody

Description

Product type	Primary Antibody
Code	BT-AP10310
Host	Rabbit
Isotype	IgG
Size	100ul, 50ul, 20ul
Immunogen	Synthesized peptide derived from human GTD2A
Mol wt	N/A
Species reactivity	Human, Rat, Mouse
Clonality	Polyclonal
Recommended application	WB
Concentration	1 mg/ml
Full name	GTD2A
Synonyms	GTD2A; General transcription factor II-I repeat domain-containing protein 2A; GTF2I repeat domain-containing protein 2A; Transcription factor GTF2IRD2-alpha

This product is for research use only, not for use in human, therapeutic or diagnostic procedure.

Background

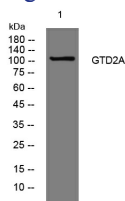
This gene is one of several closely related genes on chromosome 7 encoding proteins containing helix-loop-helix motifs. These proteins may function as regulators of transcription. The encoded protein is unique in that its C-terminus is derived from CHARLIE8 transposable element sequence. This gene is located in a region of chromosome 7 that is deleted in Williams-Beuren syndrome and loss of this locus may contribute to the cognitive phenotypes observed in this disease. Alternative splicing results in multiple transcript variants.

Recommended Dilution

WB: 1: 500 - 1: 2000

Not yet tested in other applications.

Images



Western blot analysis of lysates from HpeG2 cells, primary antibody was diluted at 1:1000, 4°C overnight

Storage

-20°C for 1 year