

## IL-20 Polyclonal Antibody

### Description

Product type	Primary Antibody
Code	BT-AP10311
Host	Rabbit
Isotype	IgG
Size	20ul, 50ul, 100ul
Immunogen	The antiserum was produced against synthesized peptide derived from human IL-20. AA range:12-61
Mol wt	20072
Species reactivity	Human, Mouse
Clonality	Polyclonal
Recommended application	WB, ELISA
Concentration	1 mg/ml
Full name	Interleukin-20
Synonyms	Interleukin-20; IL20; ZCYTO10; Interleukin-20; IL-20; Cytokine Zcyto10

This product is for research use only, not for use in human, therapeutic or diagnostic procedure.

### Background

The protein encoded by this gene is a cytokine structurally related to interleukin 10 (IL10). This cytokine has been shown to transduce its signal through signal transducer and activator of transcription 3 (STAT3) in keratinocytes. A specific receptor for this cytokine is found to be expressed in skin and upregulated dramatically in psoriatic skin, suggesting a role for this protein in epidermal function and psoriasis.

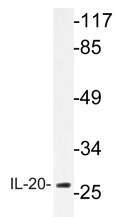
### Recommended Dilution

WB: 1: 500 - 1: 2000

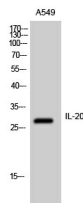
ELISA: 1: 5000

Not yet tested in other applications.

### Images



Western Blot analysis of A549 cells using IL-20 Polyclonal Antibody



Western blot analysis of lysate from A549 cells, using IL-20 antibody.

### Storage

-20°C for 1 year

