

GTD2B Rabbit Polyclonal Antibody

Description

Product type	Primary Antibody
Code	BT-AP10313
Host	Rabbit
Isotype	IgG
Size	100ul, 50ul, 20ul
Immunogen	Synthesized peptide derived from human GTD2B
Mol wt	N/A
Species reactivity	Human, Rat, Mouse
Clonality	Polyclonal
Recommended application	WB
Concentration	1 mg/ml
Full name	GTD2B
Synonyms	GTD2B; General transcription factor II-I repeat domain-containing protein 2B; GTF2I repeat domain-containing protein 2B; Transcription factor GTF2IRD2-beta

This product is for research use only, not for use in human, therapeutic or diagnostic procedure.

Background

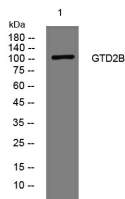
This gene encodes a glycosylated phosphoprotein with a leucine zipper motif| two helix-loop-helix motifs (1 repeats) that are similar to domains found in the TFII-I family of transcription factors| one CHARLIE8 transposable element-like sequence| and a BED zinc finger. This gene lies within a region that is deleted in Williams-Beuren syndrome. Alternatively spliced variants which encode different protein isoforms have been described; however| not all variants have been fully characterized.

Recommended Dilution

WB: 1: 500 - 1: 2000

Not yet tested in other applications.

Images



Western blot analysis of lysates from MCF-7 cells, primary antibody was diluted at 1:1000, 4°C overnight

Storage

-20°C for 1 year