

IL-7R(Phospho Tyr449) Polyclonal Antibody

Description

Product type	Primary Antibody
Code	BT-AP10349
Host	Rabbit
Isotype	IgG
Size	20ul, 50ul, 100ul
Immunogen	The antiserum was produced against synthesized peptide derived from human IL-7R/CD127 around the phosphorylation site of Tyr449. AA range:410-459
Mol wt	51567
Species reactivity	Human, Mouse
Clonality	Polyclonal
Recommended application	WB, IF, ICC, ELISA
Concentration	1 mg/ml
Full name	Interleukin-7 receptor subunit alpha
Synonyms	Interleukin-7 receptor subunit alpha; IL7R; Interleukin-7 receptor subunit alpha; IL-7 receptor subunit alpha; IL-7R subunit alpha; IL-7R-alpha; IL-7RA; CDw127; CD antigen CD127

This product is for research use only, not for use in human, therapeutic or diagnostic procedure.

Background

The protein encoded by this gene is a receptor for interleukin 7 (IL7). The function of this receptor requires the interleukin 2 receptor, gamma chain (IL2RG), which is a common gamma chain shared by the receptors of various cytokines, including interleukins 2, 4, 7, 9, and 15. This protein has been shown to play a critical role in V(D)J recombination during lymphocyte development. Defects in this gene may be associated with severe combined immunodeficiency (SCID). Alternatively spliced transcript variants have been found.

Recommended Dilution

WB: 1: 500 - 1: 2000

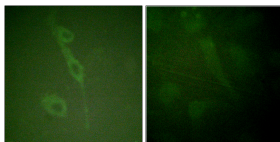
IF: 1: 200 - 1: 1000

ICC: 1: 200 - 1: 1000

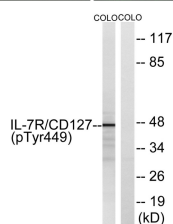
ELISA: 1: 10000

Not yet tested in other applications.

Images



Immunofluorescence analysis of HUVEC cells, using IL-7R/CD127 (Phospho-Tyr449) Antibody. The picture on the right is blocked with the phospho peptide.



Western blot analysis of lysates from COLO205 cells, using IL-7R/CD127 (Phospho-Tyr449) Antibody. The lane on the right is blocked with the phospho peptide.

Storage

-20°C for 1 year

501 Changsheng S Rd, Nanhu Dist, Jiaxing, Zhejiang, China

Tel: 86 21 31007137 | E-mail: save@bt-laboratory.com | www.bt-laboratory.com