

ILK(Phospho Ser246) Polyclonal Antibody

Description

Product type	Primary Antibody
Code	BT-AP10367
Host	Rabbit
Isotype	IgG
Size	20ul, 50ul, 100ul
Immunogen	The antiserum was produced against synthesized peptide derived from human ILK around the phosphorylation site of Ser246. AA range:212-261
Mol wt	51419
Species reactivity	Human, Mouse, Rat
Clonality	Polyclonal
Recommended application	IHC-p, IF, ELISA
Concentration	1 mg/ml
Full name	Integrin-linked protein kinase
Synonyms	Integrin-linked protein kinase; ILK; ILK1; ILK2; Integrin-linked protein kinase; 59 kDa serine/threonine-protein kinase; ILK-1; ILK-2; p59ILK

This product is for research use only, not for use in human, therapeutic or diagnostic procedure.

Background

This gene encodes a protein with a kinase-like domain and four ankyrin-like repeats. The encoded protein associates at the cell membrane with the cytoplasmic domain of beta integrins, where it regulates integrin-mediated signal transduction. Activity of this protein is important in the epithelial to mesenchymal transition, and over-expression of this gene is implicated in tumor growth and metastasis. Alternative splicing results in multiple transcript variants.

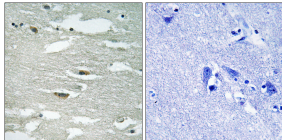
Recommended Dilution

IHC-p: 1: 100 - 1: 300

ELISA: 1: 5000

Not yet tested in other applications.

Images



Immunohistochemistry analysis of paraffin-embedded human brain, using ILK (Phospho-Ser246) Antibody. The picture on the right is blocked with the phospho peptide.

Storage

-20°C for 1 year