

IMP2L Polyclonal Antibody

Description

Product type	Primary Antibody
Code	BT-AP10375
Host	Rabbit
Isotype	IgG
Size	20ul, 50ul, 100ul
Immunogen	Synthesized peptide derived from human protein . at AA range: 30-110
Mol wt	N/A
Species reactivity	Human, Mouse
Clonality	Polyclonal
Recommended application	WB, ELISA
Concentration	1 mg/ml
Full name	Mitochondrial inner membrane protease subunit 2
Synonyms	Mitochondrial inner membrane protease subunit 2 ;EC 3.4.21.-.;IMP2-like protein

This product is for research use only, not for use in human, therapeutic or diagnostic procedure.

Background

This gene encodes a protein involved in processing the signal peptide sequences used to direct mitochondrial proteins to the mitochondria. The encoded protein resides in the mitochondria and is one of the necessary proteins for the Catalytic activity of the mitochondrial inner membrane peptidase (IMP) complex. Two variants that encode the same protein have been described for this gene.

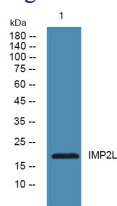
Recommended Dilution

WB: 1: 500 - 1: 2000

ELISA: 1: 5000 - 1: 20000

Not yet tested in other applications.

Images



Western blot analysis of lysates from Jarkat cells, primary antibody was diluted at 1:1000, 4°C overnight

Storage

-20°C for 1 year