

ING2 Polyclonal Antibody

Description

Product type	Primary Antibody
Code	BT-AP10381
Host	Rabbit
Isotype	IgG
Size	20ul, 50ul, 100ul
Immunogen	Synthesized peptide derived from part region of human protein
Mol wt	N/A
Species reactivity	Human, Mouse
Clonality	Polyclonal
Recommended application	WB, ELISA
Concentration	1 mg/ml
Full name	Inhibitor of growth protein 2
Synonyms	Inhibitor of growth protein 2 ;Inhibitor of growth 1-like protein;ING1Lp;p32;p33ING2

This product is for research use only, not for use in human, therapeutic or diagnostic procedure.

Background

This gene is a member of the inhibitor of growth (ING) family. Members of the ING family associate with and modulate the activity of histone acetyltransferase (HAT) and histone deacetylase (HDAC) complexes and function in DNA repair and apoptosis. Alternative splicing results in multiple transcript variants.

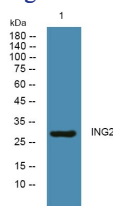
Recommended Dilution

WB: 1: 500 - 1: 2000

ELISA: 1: 5000 - 1: 20000

Not yet tested in other applications.

Images



Western blot analysis of lysates from U2OS cells, primary antibody was diluted at 1:1000, 4°C overnight

Storage

-20°C for 1 year