

## HEN1 Rabbit Polyclonal Antibody

### Description

Product type	Primary Antibody
Code	BT-AP10388
Host	Rabbit
Isotype	IgG
Size	100ul, 50ul, 20ul
Immunogen	Synthesized peptide derived from human HEN1
Mol wt	14630
Species reactivity	Human, Mouse
Clonality	Polyclonal
Recommended application	WB
Concentration	1 mg/ml
Full name	HEN1
Synonyms	HEN1

This product is for research use only, not for use in human, therapeutic or diagnostic procedure.

### Background

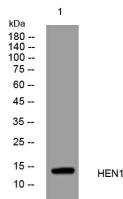
The helix-loop-helix (HLH) proteins are a family of putative transcription factors| some of which have been shown to play an important role in growth and development of a wide variety of tissues and species. Four members of this family have been clearly implicated in tumorigenesis via their involvement in chromosomal translocations in lymphoid tumors: MYC (MIM 190080)| LYL1 (MIM 151440)| E2A (MIM 147141)| and SCL (MIM 187040).

### Recommended Dilution

WB: 1: 500 - 1: 2000

Not yet tested in other applications.

### Images



Western blot analysis of lysates from MCF-7 cells, primary antibody was diluted at 1:1000, 4°C overnight

### Storage

-20°C for 1 year