

INSL3 Polyclonal Antibody

Description

Product type	Primary Antibody
Code	BT-AP10396
Host	Rabbit
Isotype	IgG
Size	20ul, 50ul, 100ul
Immunogen	Synthetic peptide from human protein at AA range: 10-50
Mol wt	N/A
Species reactivity	Human, Rat, Mouse
Clonality	Polyclonal
Recommended application	IHC-p, IF, ELISA
Concentration	1 mg/ml
Full name	Insulin-like 3
Synonyms	Insulin-like 3 ;Leydig insulin-like peptide;Ley-I-L;Relaxin-like factor [Cleaved into: Insulin-like 3 B chain; Insulin-like 3 A chain]; Insulin-like 3; Leydig insulin-like peptide; Ley-I-L; Relaxin-like factor; Insulin-like 3 B chain; Insulin-like 3 A chain;

This product is for research use only, not for use in human, therapeutic or diagnostic procedure.

Background

This gene encodes a member of the insulin-like hormone superfamily. The encoded protein is mainly produced in gonadal tissues. Studies of the mouse counterpart suggest that this gene may be involved in the development of urogenital tract and female fertility. This protein may also act as a hormone to regulate growth and differentiation of gubernaculum, and thus mediating intra-abdominal testicular descent. Mutations in this gene may lead to cryptorchidism. Alternate splicing results in multiple transcript variants.

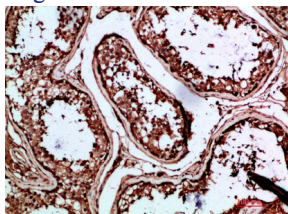
Recommended Dilution

IHC-p: 1: 50 - 1: 200

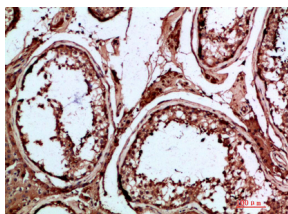
ELISA: 1: 10000 - 1: 20000

Not yet tested in other applications.

Images



Immunohistochemical analysis of paraffin-embedded human-testis, antibody was diluted at 1:200



Immunohistochemical analysis of paraffin-embedded human-testis, antibody was diluted at 1:200

Storage

-20°C for 1 year

501 Changsheng S Rd, Nanhu Dist, Jiaxing, Zhejiang, China

Tel: 86 21 31007137 | E-mail: save@bt-laboratory.com | www.bt-laboratory.com