

## INSL5 Polyclonal Antibody

### Description

Product type	Primary Antibody
Code	BT-AP10398
Host	Rabbit
Isotype	IgG
Size	20ul, 50ul, 100ul
Immunogen	Synthesized peptide derived from human protein . at AA range: 30-110
Mol wt	N/A
Species reactivity	Human, Mouse
Clonality	Polyclonal
Recommended application	WB, ELISA
Concentration	1 mg/ml
Full name	Insulin-like peptide INSL5
Synonyms	Insulin-like peptide INSL5 ;Insulin-like peptide 5 [Cleaved into: Insulin-like peptide INSL5 B chain; Insulin-like peptide INSL5 A chain]

**This product is for research use only, not for use in human, therapeutic or diagnostic procedure.**

### Background

The protein encoded by this gene contains a classical signature of the insulin superfamily and is highly similar to relaxin 3 (RLN3/INSL7).

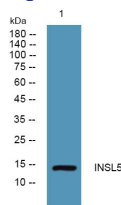
### Recommended Dilution

WB: 1: 500 - 1: 2000

ELISA: 1: 5000 - 1: 20000

Not yet tested in other applications.

### Images



Western blot analysis of lysates from K562 cells, primary antibody was diluted at 1:1000, 4°C overnight

### Storage

-20°C for 1 year

501 Changsheng S Rd, Nanhu Dist, Jiaxing, Zhejiang, China

Tel: 86 21 31007137 | E-mail: [save@bt-laboratory.com](mailto:save@bt-laboratory.com) | [www.bt-laboratory.com](http://www.bt-laboratory.com)