

Insulin Polyclonal Antibody

Description

Product type	Primary Antibody
Code	BT-AP10406
Host	Rabbit
Isotype	IgG
Size	20ul, 50ul, 100ul
Immunogen	Synthetic peptide from human protein at AA range: 30-70
Mol wt	N/A
Species reactivity	Human, Mouse, Rat
Clonality	Polyclonal
Recommended application	IHC-p, IF, ELISA
Concentration	1 mg/ml
Full name	Insulin [Cleaved into: Insulin B chain; Insulin A chain]
Synonyms	Insulin [Cleaved into: Insulin B chain; Insulin A chain]; Insulin [Cleaved into: Insulin B chain; Insulin A chain];

This product is for research use only, not for use in human, therapeutic or diagnostic procedure.

Background

After removal of the precursor signal peptide, proinsulin is post-translationally cleaved into three peptides: the B chain and A chain peptides, which are covalently linked via two disulfide bonds to form insulin, and C-peptide. Binding of insulin to the insulin receptor (INSR) stimulates glucose uptake. A multitude of mutant alleles with phenotypic effects have been identified. There is a read-through gene, INS-IGF2, which overlaps with this gene at the 5' region and with the IGF2 gene at the 3' region. Alternative splicing results in multiple transcript variants.

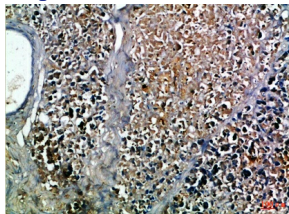
Recommended Dilution

IHC-p: 1: 50 - 1: 200

ELISA: 1: 10000 - 1: 20000

Not yet tested in other applications.

Images



Immunohistochemical analysis of paraffin-embedded Human-pancreas, antibody was diluted at 1:100

Storage

-20°C for 1 year