

Integrin alphaD Polyclonal Antibody

Description

Product type	Primary Antibody
Code	BT-AP10424
Host	Rabbit
Isotype	IgG
Size	20ul, 50ul, 100ul
Immunogen	The antiserum was produced against synthesized peptide derived from the Internal region of human ITGAD. AA range:901-950
Mol wt	126886
Species reactivity	Human, Rat, Mouse
Clonality	Polyclonal
Recommended application	WB, IHC-p, IF, ELISA
Concentration	1 mg/ml
Full name	Integrin alpha-D
Synonyms	Integrin alpha-D; ITGAD; Integrin alpha-D; ADB2; CD11 antigen-like family member D; Leukointegrin alpha D; CD11d

This product is for research use only, not for use in human, therapeutic or diagnostic procedure.

Background

This gene belongs to the beta-2 integrin family of membrane glycoproteins, which are composed of non-covalently linked alpha and beta subunits to form a heterodimer. It encodes the alpha subunit of the cell surface heterodimers and is involved in the activation and adhesion functions of leukocytes. The gene is located about 11kb downstream of the integrin subunit alpha X gene, another member of the integrin family. It is expressed in the tissue and circulating myeloid leukocytes. Alternative splicing results in multiple transcript variants.

Recommended Dilution

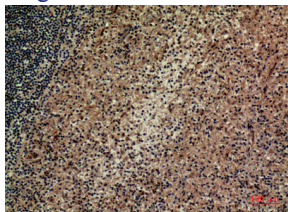
WB: 1: 500 - 1: 2000

IHC-p: 1: 100 - 1: 300

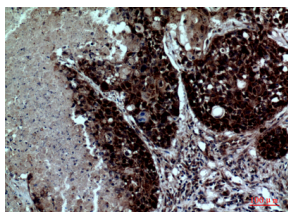
ELISA: 1: 20000

Not yet tested in other applications.

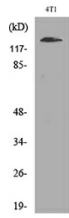
Images



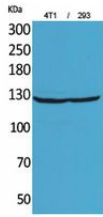
Immunohistochemical analysis of paraffin-embedded human-lung, antibody was diluted at 1:100



Immunohistochemical analysis of paraffin-embedded human-spleen, antibody was diluted at 1:100



Western Blot analysis of 4T1, 293 cells using Integrin α D Polyclonal Antibody. Secondary antibody was diluted at 1:20000



Western blot analysis of lysate from 4T1 cells, using ITGAD Antibody.

Storage

-20°C for 1 year

501 Changsheng S Rd, Nanhu Dist, Jiaxing, Zhejiang, China

Tel: 86 21 31007137 | E-mail: save@bt-laboratory.com | www.bt-laboratory.com