

Integrin beta 1(Phospho Tyr795) Polyclonal Antibody

Description

Product type	Primary Antibody
Code	BT-AP10430
Host	Rabbit
Isotype	IgG
Size	20ul, 50ul, 100ul
Immunogen	The antiserum was produced against synthesized peptide derived from human ITGB1 around the phosphorylation site of Tyr795. AA range:749-798
Mol wt	88465
Species reactivity	Human, Mouse, Rat
Clonality	Polyclonal
Recommended application	WB, ELISA
Concentration	1 mg/ml
Full name	Integrin beta-1
Synonyms	Integrin beta-1; ITGB1; FNRB; MDF2; MSK12; Integrin beta-1; Fibronectin receptor subunit beta; VLA-4 subunit beta; CD antigen CD29

This product is for research use only, not for use in human, therapeutic or diagnostic procedure.

Background

Integrins are heterodimeric proteins made up of alpha and beta subunits. At least 18 alpha and 8 beta subunits have been described in mammals. Integrin family members are membrane receptors involved in cell adhesion and recognition in a variety of processes including embryogenesis, hemostasis, tissue repair, immune response and metastatic diffusion of tumor cells. This gene encodes a beta subunit. Multiple alternatively spliced transcript variants which encode different protein isoforms have been found for this gene.

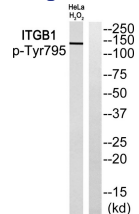
Recommended Dilution

WB: 1: 500 - 1: 2000

ELISA: 1: 40000

Not yet tested in other applications.

Images



Western blot analysis of ITGB1 (Phospho-Tyr795) Antibody. The lane on the right is blocked with the ITGB1 (Phospho-Tyr795) peptide.

Storage

-20°C for 1 year