

Histone H3 Rabbit Polyclonal Antibody

Description

Product type	Primary Antibody
Code	BT-AP10432
Host	Rabbit
Isotype	IgG
Size	100ul, 50ul, 20ul
Immunogen	Synthesized peptide derived from human Histone H3 Polyclonal Antibody
Mol wt	14960
Species reactivity	Human, Mouse, Rat
Clonality	Polyclonal
Recommended application	WB, ELISA
Concentration	1 mg/ml
Full name	Histone H3 Polyclonal Antibody
Synonyms	Histone H3 Polyclonal Antibody; Histone H3.1; Histone H3/a; Histone H3/b; Histone H3/c; Histone H3/d; Histone H3/f; Histone H3/h; Histone H3/i; Histone H3/j; Histone H3/k; Histone H3/l

This product is for research use only, not for use in human, therapeutic or diagnostic procedure.

Background

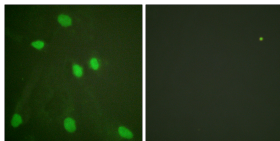
Recommended Dilution

WB: 1: 1000 - 1: 2000

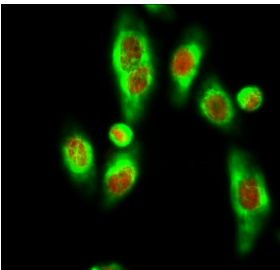
ELISA: 1: 5000 - 1: 20000

Not yet tested in other applications.

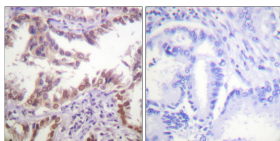
Images



Immunofluorescence analysis of HeLa cell. Histone H3 Polyclonal Antibody(Red) was diluted at 1:200(4°C overnight). β -actin Monoclonal Antibody(5B7)(Green) was diluted at 1:200(4°C overnight).

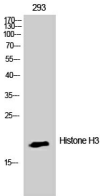


Immunofluorescence analysis of HeLa cells, using Histone H3 Antibody. The picture on the right is blocked with the synthesized peptide.



Immunohistochemistry analysis of paraffin-embedded human lung carcinoma tissue, using Histone H3 Antibody. The picture on the right is blocked with the synthesized peptide.

Western Blot analysis of 293 cells using Histone H3 Polyclonal Antibody



Storage

-20°C for 1 year

501 Changsheng S Rd, Nanhu Dist, Jiaxing, Zhejiang, China
Tel: 86 21 31007137 | E-mail: save@bt-laboratory.com | www.bt-laboratory.com