

Integrin beta 2(Phospho Thr758) Polyclonal Antibody

Description

Product type	Primary Antibody
Code	BT-AP10435
Host	Rabbit
Isotype	IgG
Size	20ul, 50ul, 100ul
Immunogen	The antiserum was produced against synthesized peptide derived from human CD18/ITGB2 around the phosphorylation site of Thr758. AA range:720-769
Mol wt	84782
Species reactivity	Human, Mouse, Rat
Clonality	Polyclonal
Recommended application	IF, ICC, ELISA
Concentration	1 mg/ml
Full name	Integrin beta-2
Synonyms	Integrin beta-2; ITGB2; CD18; MFI7; Integrin beta-2; Cell surface adhesion glycoproteins LFA-1/CR3/p150; 95 subunit beta; Complement receptor C3 subunit beta; CD antigen CD18

This product is for research use only, not for use in human, therapeutic or diagnostic procedure.

Background

This gene encodes an integrin beta chain, which combines with multiple different alpha chains to form different integrin heterodimers. Integrins are integral cell-surface proteins that participate in cell adhesion as well as cell-surface mediated signalling. The encoded protein plays an important role in immune response and defects in this gene cause leukocyte adhesion deficiency. Alternative splicing results in multiple transcript variants.

Recommended Dilution

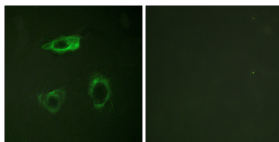
IF: 1: 200 - 1: 1000

ICC: 1: 200 - 1: 1000

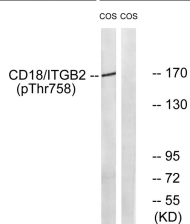
ELISA: 1: 40000

Not yet tested in other applications.

Images



Immunofluorescence analysis of HepG2 cells, using CD18/ITGB2 (Phospho-Thr758) Antibody. The picture on the right is blocked with the phospho peptide.



Western blot analysis of lysates from COS7 cells treated with EGF 200ng/ml 30', using CD18/ITGB2 (Phospho-Thr758) Antibody. The lane on the right is blocked with the phospho peptide.

Storage

-20°C for 1 year

501 Changsheng S Rd, Nanhu Dist, Jiaxing, Zhejiang, China

Tel: 86 21 31007137 | E-mail: save@bt-laboratory.com | www.bt-laboratory.com